



# DIATREME RESOURCES LIMITED ABN 33 061 267 061

Subsidiary Companies: Lost Sands Pty Ltd ABN 27 101 269 747  
Chalcophile Resources Pty Ltd ABN 41 090 712 217  
Regional Exploration Management Pty Ltd ABN 55 093 739 336



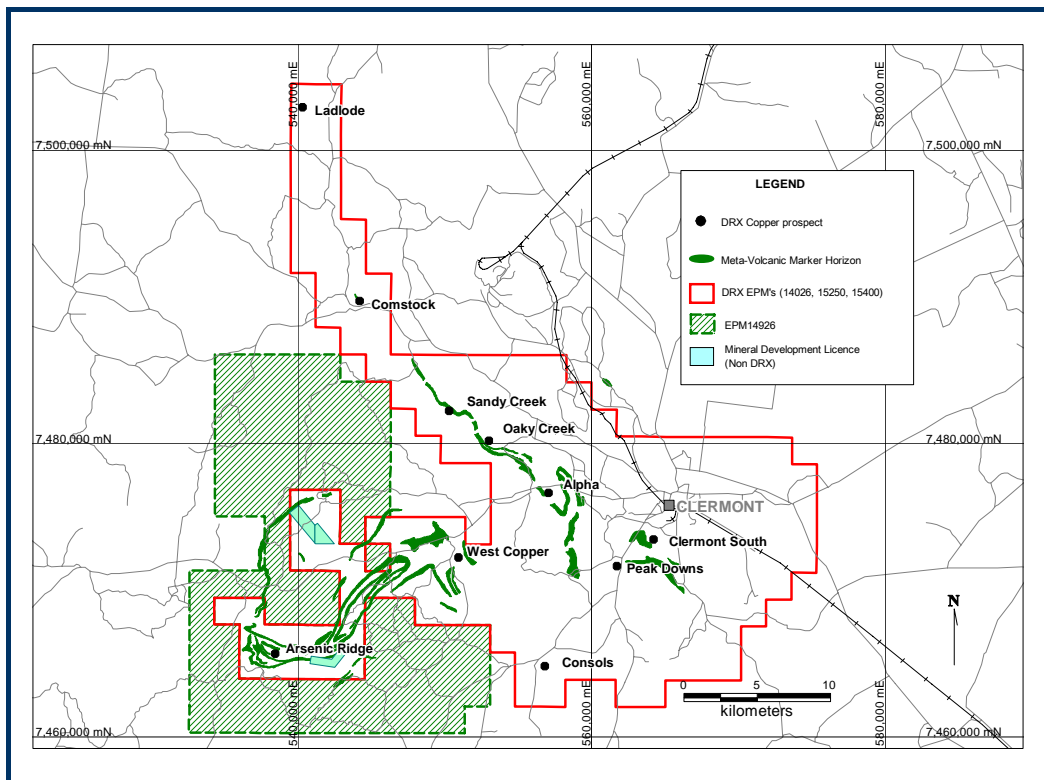
ASX Code: DRX

Company Announcement Office  
Australian Securities Exchange  
Level 4, 20 Bridge Street  
Sydney NSW 2000

4 August 2008

## CLERMONT COPPER PROJECT - QUEENSLAND ADDITIONAL EXPLORATION GROUND

DRX is pleased to announce that it has entered into a commercial agreement\* with Accent Resources NL (ASX: ACS) to purchase EPM 14692. The tenement, covering 282km<sup>2</sup>, is situated immediately adjacent to DRX's existing Clermont tenements (refer figure below) and will add significant additional copper / gold prospective ground to the project area.



Initial exploration in the newly acquired area will be conducted in conjunction with DRX's current program which is targeting numerous VTEM anomalies along the prospective meta-volcanic marker horizon.

**Anthony J Fawdon**  
Executive Chairman/CEO

\* Purchase consideration of \$50,000 (GST inclusive) plus replacement of financial assurance of \$2,500.

### Registered / Principal Office

Level 2, 87 Wickham Terrace, Spring Hill, Qld, 4000  
PO Box 10288 Brisbane Adelaide Street Queensland 4000

Telephone: 61 7 3832 5666  
Email: [manager@diatreme.com.au](mailto:manager@diatreme.com.au)

Facsimile: 61 7 3832 5300  
[www.diatreme.com.au](http://www.diatreme.com.au)